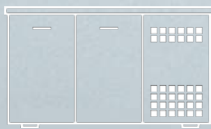


TEFCOLD[®]



2019-2020



UPRIGHT CABINETS

Stainless Steel Upright Freezers - Stainless Steel Upright Coolers

TEFCOLD stainless steel cooler cabinets and freezers are used for storage in professional kitchens. They come in high quality SS304 stainless steel, approved for industrial kitchens.

Most models are available as cooler or freezer, making it possible to match them up.

And remember that our stainless steel cooler cabinets and freezers are mounted on heavy duty wheels as standard, making kitchen cleaning even easier.



TEFCOLD RK710G-P

Gastro upright cooler in stainless steel.
When you need visible and easy access to cold storage.

Gastro - Upright Cabinets



Fish trays with SS304 bottom shelf



Castors with and without brake

RKS600-I

Fish Cooler

- Designed for fish
- Stainless steel
- Reversible solid door
- Ventilated cooling
- Lock
- Self-closing door
- Adjustable shelves GN2/1
- Strong wheels



RF500SNACK-P

Snack Freezer

- Reversible solid door
- Stainless steel
- Static cooling
- Lock
- Self-closing door
- Adjustable shelves
- Adjustable feet



RK500SNACK-I

Snack Cooler

- Reversible solid door
- Stainless steel
- Fan assisted cooling
- Lock
- Self-closing door
- Adjustable shelves
- Adjustable feet



MODEL		RF500SNACK-P	RK500SNACK-I	RKS600-I
Gross / Net Volume	l	450 / 429	450 / 429	560 / 507
Gross / Net Weight	kg	140 / 130	140 / 130	145 / 135
Net Volume Energy Rating	l		313	
Climate Class		4	4	4
Temperature Range	°C	-24 to -10	-2 to 8	-6 to 8
Door Number & Type		1 hinged self-closing solid door	1 hinged self-closing solid door	1 hinged self-closing solid door
Reversible door		Yes	Yes	Yes
Shelves Number & Type		3 wire shelves white	wire shelves white	fish trays
Shelf Dimensions		530 x 540 mm	530 x 540 mm	GN2/1
Feet / Legs		4 adjustable feet	4 adjustable feet	-
Castors		-	-	4 wheels, 2 with brake
Exterior Finish		SS304	SS304	SS304
Interior Finish		SS304	SS304	SS304
Lock		Yes	Yes	Yes
Thermometer		Yes	Yes	Yes
Type of Controller		Electronic	Electronic	Electronic
Noise Level	db(A)	42	42	42
Type of Cooling		Static	Fan assisted	Static
Type of Defrost		Manual	Automatic	Automatic
Refrigerant		R290	R600a	R600a
Refrigerant Charge	g	100	90	85
Input Power	W	490	353	353
Voltage / Frequency	V/Hz	220-240/50	220-240/50	220-240/50
Energy Consumption	kWh/24h	5,12	1,12	1,19
Energy Classification		-	C	-
Internal Dimension (WxDxH)	mm	560 x 553 x 1380	560 x 553 x 1380	560 x 653 x 1396
External Dimension (WxDxH)	mm	680 x 700 x 1900	680 x 700 x 1900	680 x 810 x 2010
Packed Dimension (WxDxH)	mm	715 x 745 x 2135	745 x 720 x 2130	715 x 840 x 2050
40ft Container Load	pcs	48	48	39

Gastro - Upright Cabinets



RK1010-P

Upright Cooler

- Stainless steel
- Ventilated cooling
- Lock
- Self-closing doors
- Adjustable shelves
- Strong wheels



Adjustable shelves



Automatic defrost system



RF505-P

Upright Freezer

- Reversible solid door
- Stainless steel
- Ventilated cooling
- Lock
- Self-closing door
- Adjustable shelves
- Strong wheels

D



RK505-I

Upright Cooler

- Reversible solid door
- Stainless steel
- Ventilated cooling
- Lock
- Self-closing door
- Adjustable shelves GN2/1
- Strong wheels

C

MODEL		RF1010-P	RF505-P	RK1010-P	RK505-I
Gross / Net Volume	l	976 / 900	466 / 429	976 / 900	466 / 429
Gross / Net Weight	kg	194 / 189	135 / 130	184 / 179	132 / 128
Net Volume Energy Rating	l	620	313	620	313
Climate Class		4	4	4	4
Temperature Range	°C	-24 to -18	-24 to -18	-2 to 8	-2 to 8
Door Number & Type		2 hinged self-closing solid doors	1 hinged self-closing solid door	2 hinged self-closing solid doors	1 hinged self-closing solid door
Reversible door		No	Yes	No	Yes
Shelves Number & Type		6 wire shelves white	3 wire shelves white	6 wire shelves white	wire shelves white
Shelf Dimensions		530 x 540 mm	530 x 540 mm	530 x 540 mm	530 x 540 mm
Castors		4 wheels, 2 with brake	4 wheels, 2 with brake	4 wheels, 2 with brake	4 wheels, 2 with brake
Exterior Finish		SS304	SS304	SS304	SS304
Interior Finish		SS304	SS304	SS304	SS304
Lock		Yes	Yes	Yes	Yes
Thermometer		Yes	Yes	Yes	Yes
Type of Controller		Electronic	Electronic	Electronic	Electronic
Noise Level	db(A)	45	45	45	45
Type of Cooling		Ventilated	Ventilated	Ventilated	Ventilated
Type of Defrost		Automatic	Automatic	Automatic	Automatic
Refrigerant		R290	R290	R290	R600a
Refrigerant Charge	g	145	100	150	90
Input Power	W	740	490	400	255
Voltage / Frequency	V/Hz	220-240/50	220-240/50	220-240/50	220-240/50
Energy Consumption	kWh/24h	8,23	5,12	1,76	1,22
Energy Classification		D	D	C	C
Internal Dimension (WxDxH)	mm	1220 x 553 x 1386	560 x 553 x 1386	1220 x 553 x 1386	560 x 553 x 1386
External Dimension (WxDxH)	mm	1340 x 700 x 2010	680 x 700 x 2010	1340 x 700 x 2010	680 x 700 x 2010
Packed Dimension (WxDxH)	mm	1400 x 800 x 2150	750 x 800 x 2150	1400 x 800 x 2150	750 x 800 x 2150
40ft Container Load	pcs	22	48	22	48

Gastro - Upright Cabinets



RK1420-P

Upright Cooler GN2/1

- Stainless steel
- Ventilated cooling
- Lock
- Self-closing doors
- Adjustable shelves GN2/1
- Strong wheels



Adjustable shelves



Castors with and without brake



RF1420-P
Upright Freezer GN2/1

- Stainless steel
- Ventilated cooling
- Lock
- Self-closing doors
- Adjustable shelves GN2/1
- Strong wheels



RK1420G-P
Upright Cooler GN2/1

- Hinged glass door
- Stainless steel
- Ventilated cooling
- Lock
- Self-closing doors
- Adjustable shelves GN2/1
- Strong wheels

D

MODEL		RF1420-P	RK1420G-P	RK1420-P
Gross / Net Volume	l	1410 / 1325	1410 / 1325	1410 / 1325
Gross / Net Weight	kg	234 / 224	241 / 218	221 / 198
Net Volume Energy Rating	l	1004		1004
Climate Class		4	4	4
Temperature Range	°C	-24 to -18	-2 to 10	-2 to 10
Door Number & Type		2 hinged self-closing solid doors	2 hinged self-closing glass doors	2 hinged self-closing solid doors
Shelves Number & Type		6 wire shelves white	6 wire shelves white	6 wire shelves white
Shelf Dimensions		GN2/1	GN2/1	GN2/1
Interior Light		LED	LED	LED
Castors		4 wheels, 2 with brake	4 wheels, 2 with brake	4 wheels, 2 with brake
Exterior Finish		SS304	SS304	SS304
Interior Finish		SS304	SS304	SS304
Lock		Yes	Yes	Yes
Thermometer		Yes	Yes	Yes
Type of Controller		Electronic	Electronic	Electronic
Noise Level	db(A)	48	48	48
Type of Cooling		Ventilated	Ventilated	Ventilated
Type of Defrost		Automatic	Automatic	Automatic
Refrigerant		R290	R290	R290
Refrigerant Charge	g	150	150	150
Input Power	W	730	320	320
Voltage / Frequency	V/Hz	220-240/50	220-240/50	220-240/50
Energy Consumption	kWh/24h	12,48	4,1	2,82
Energy Classification		D	-	C
Internal Dimension (WxDxH)	mm	1360 x 685 x 1396	1360 x 685 x 1396	1360 x 685 x 1396
External Dimension (WxDxH)	mm	1480 x 850 x 2010	1480 x 850 x 2010	1480 x 850 x 2010
Packed Dimension (WxDxH)	mm	1510 x 880 x 2070	1510 x 880 x 2070	1510 x 880 x 2070
40ft Container Load	pcs	15	15	15

Gastro - Upright Cabinets



Adjustable shelves



Euronorm kit as option

RK710-P

Upright Cooler GN2/1

- Reversible solid door
- Stainless steel
- Ventilated cooling
- Lock
- Self-closing door
- Adjustable shelves GN2/1
- Strong wheels





RF710-P
Upright Freezer GN2/1

- Reversible solid door
- Stainless steel
- Ventilated cooling
- Lock
- Self-closing door
- Adjustable shelves GN2/1
- Strong wheels



RK710G-P
Upright Cooler GN2/1

- Reversible self-closing glass door
- Stainless steel
- Ventilated cooling
- Lock
- Adjustable shelves GN2/1
- Strong wheels

D

MODEL		RF710-P	RK710G-P	RK710-P
Gross / Net Volume	l	650 / 597	650 / 597	650 / 597
Gross / Net Weight	kg	153 / 148	158 / 144	148 / 134
Net Volume Energy Rating	l	473	473	473
Climate Class		4	4	4
Temperature Range	°C	-24 to -18	2 to 10	-2 to 10
Door Number & Type		1 hinged self-closing solid door	1 hinged self-closing glass door	1 hinged self-closing solid door
Reversible door		Yes	Yes	Yes
Shelves Number & Type		3 wire shelves white	3 wire shelves white	3 wire shelves white
Shelf Dimensions		GN2/1	GN2/1	GN2/1
Interior Light		LED	LED	LED
Castors		4 wheels, 2 with brake	4 wheels, 2 with brake	4 wheels, 2 with brake
Exterior Finish		SS304	SS304	SS304
Interior Finish		SS304	SS304	SS304
Lock		Yes	Yes	Yes
Thermometer		Yes	Yes	Yes
Type of Controller		Electronic	Electronic	Electronic
Noise Level	db(A)	45	48	48
Type of Cooling		Ventilated	Ventilated	Ventilated
Type of Defrost		Automatic	Automatic	Automatic
Refrigerant		R290	R290	R290
Refrigerant Charge	g	90	95	95
Input Power	W	650	315	315
Voltage / Frequency	V/Hz	220-240/50	220-240/50	220-240/50
Energy Consumption	kWh/24h	7,19	2,83	1,53
Energy Classification		D	-	C
Internal Dimension (WxDxH)	mm	624 x 685 x 1396	624 x 685 x 1396	624 x 685 x 1396
External Dimension (WxDxH)	mm	740 x 850 x 2010	740 x 850 x 2010	740 x 850 x 2010
Packed Dimension (WxDxH)	mm	770 x 880 x 2070	770 x 880 x 2070	770 x 880 x 2070
40ft Container Load	pcs	39	39	39

Upright Bakery Freezers



Castors with and without brake



Guides for Bakery trays

BF850-P

Upright Bakery Freezer

- Reversible solid door
- Stainless steel
- Ventilated cooling
- Lock
- Self-closing door
- Guides for 600x800 bakery trays
- Strong wheels

D



BK850-P

Upright Bakery Cooler

- Reversible solid door
- Stainless steel
- Ventilated cooling
- Lock
- Self-closing door
- Guides for 600x800 bakery trays
- Strong wheels

C

DID YOU KNOW?

We have more than 35,000 units in stock all year – In high seasons even more.

If you are buying in large volumes, we also ship directly from our production facilities.

MODEL		BF850-P	BK850-P
Gross / Net Volume	l	850 / 737	850 / 737
Gross / Net Weight	kg	161 / 143	161 / 143
Climate Class		4	4
Temperature Range	°C	-24 to -18	-2 to 10
Door Number & Type		1 hinged self-closing solid door	1 hinged self-closing solid door
Reversible door		Yes	Yes
Shelves Number & Type		guides for bakery trays	guides for bakery trays
Interior Light		LED	LED
Castors		4 wheels, 2 with brake	4 wheels, 2 with brake
Exterior Finish		SS304	SS304
Interior Finish		SS304	SS304
Thermometer		Yes	Yes
Type of Controller		Electronic	Electronic
Noise Level	db(A)	48	48
Type of Cooling		Ventilated	Ventilated
Type of Defrost		Automatic	Automatic
Refrigerant		R290	R290
Refrigerant Charge	g	115	100
Input Power	W	700	330
Voltage / Frequency	V/Hz	220-240/50	220-240/50
Energy Consumption	kWh/24h	8,63	2,17
Energy Classification		D	C
Internal Dimension (WxDxH)	mm	624 x 846 x 1396	624 x 846 x 1396
External Dimension (WxDxH)	mm	740 x 990 x 2010	740 x 990 x 2010
Packed Dimension (WxDxH)	mm	770 x 880 x 2070	770 x 880 x 2070
40ft Container Load	pcs	39	39

Gastro - Upright Cabinets



Plastic baskets as option



Wheels or adjustable legs as option

UF550S-I

Upright Freezer

- Reversible solid door
- Electronic thermostat
- Stainless steel cabinet
- Fixed freezing shelves
- Adjustable feet



UF550-I Upright Freezer

- Reversible solid door
- Electronic thermostat
- Fixed freezing shelves
- Adjustable feet



UR550S-I Upright Cooler

- Reversible solid door
- Electronic thermostat
- Fan assisted cooling
- Lock
- Stainless steel cabinet
- Adjustable shelves
- Adjustable feet

C

MODEL		UF550-I	UF550S-I	UR550-I	UR550S-I
Gross / Net Volume	l	461 / 420	461 / 420	461 / 420	461 / 420
Gross / Net Weight	kg	101 / 94	101 / 94	101 / 94	101 / 94
Net Volume Energy Rating	l			410	410
Climate Class		4	4	4	4
Temperature Range	°C	-24 to -10	-24 to -10	0 to 10	0 to 10
Door Number & Type		1 hinged solid door	1 hinged solid door	1 hinged solid door	1 hinged solid doors
Reversible door		Yes	Yes	Yes	Yes
Shelves Number & Type		6 fixed freezing shelves	6 fixed freezing shelves	4 wire shelves white	4 wire shelves white
Shelf Dimensions		GN2/1	GN2/1	GN2/1	GN2/1
Interior Light		No	No	No	No
Feet / Legs		2 adjustable feet	2 adjustable feet	2 adjustable feet	2 adjustable feet
Castors		2 rollers	2 rollers	2 rollers	2 rollers
Exterior Finish		White RAL9016	SS430	White	SS430
Interior Finish		White RAL9016	White RAL9016	White ABS	White ABS
Lock		Yes	Yes	Yes	Yes
Thermometer		Yes	Yes	Yes	Yes
Type of Controller		Electronic	Electronic	Electronic	Electronic
Noise Level	db(A)	45	45	45	45
Type of Cooling		Static	Static	Fan assisted	Fan assisted
Type of Defrost		Manual	Manual	Automatic	Automatic
Refrigerant		R600a	R600a	R600a	R600a
Refrigerant Charge	g	130	130	95	95
Input Power	W	190	190	130	130
Voltage / Frequency	V/Hz	220-240/50	220-240/50	220-240/50	220-240/50
Energy Consumption	kWh/24h	2,24	2,24	1,7	1,7
Energy Classification		-	-	C	C
Internal Dimension (WxDxH)	mm	600 x 555 x 1469	600 x 555 x 1469	600 x 555 x 1469	600 x 555 x 1469
External Dimension (WxDxH)	mm	777 x 720 x 1720	777 x 720 x 1720	777 x 720 x 1720	777 x 720 x 1720
Packed Dimension (WxDxH)	mm	850 x 770 x 1900	850 x 770 x 1900	850 x 770 x 1890	850 x 770 x 1890
40ft Container Load	pcs	42	42	42	42

Gastro - Upright Cabinets



Plastic baskets as option



Wheels or adjustable legs as option

UF600S-I

Upright Freezer GN2/1

- Reversible solid door
- Electronic thermostat
- Stainless steel cabinet
- Fixed freezing shelves
- Adjustable feet



UF600-I
Upright Freezer GN2/1

- Reversible solid door
- Electronic thermostat
- Fixed freezing shelves
- Adjustable feet



UR600S-I
Upright Cooler GN2/1

- Reversible solid door
- Electronic thermostat
- Fan assisted cooling
- Lock
- Stainless steel cabinet
- Adjustable shelves GN2/1
- Adjustable feet

C

MODEL		UF600-I	UF600S-I	UR600-I	UR600S-I
Gross / Net Volume	l	605 / 555	605 / 555	605 / 570	605 / 570
Gross / Net Weight	kg	112 / 107	112 / 107	112 / 107	112 / 107
Net Volume Energy Rating	l			476	476
Climate Class		4	4	4	4
Temperature Range	°C	-24 to -10	-24 to -10	0 to 10	0 to 10
Door Number & Type		1 hinged solid door	1 hinged solid door	1 hinged solid door	1 hinged solid door
Reversible door		Yes	Yes	Yes	Yes
Shelves Number & Type		6 fixed freezing GN2/1	6 fixed freezing GN2/1	4 wire shelves white	4 wire shelves white
Shelf Dimensions		GN2/1	GN2/1	GN2/1	GN2/1
Interior Light		No	No	No	No
Feet / Legs		2 adjustable feet	2 adjustable feet	2 adjustable feet	2 adjustable feet
Castors		2 rollers	2 rollers	2 rollers	2 rollers
Exterior Finish		White	SS430	White	SS430
Interior Finish		ABS	ABS	White ABS	ABS
Lock		Yes	Yes	Yes	Yes
Thermometer		Yes	Yes	Yes	Yes
Type of Controller		Electronic	Electronic	Electronic	Electronic
Noise Level	db(A)	45	45	45	45
Type of Cooling		Static	Static	Fan assisted	Fan assisted
Type of Defrost		Manual	Manual	Automatic	Automatic
Refrigerant		R600a	R600a	R600a	R600a
Refrigerant Charge	g	130	130	100	100
Input Power	W	190	190	130	130
Voltage / Frequency	V/Hz	220-240/50	220-240/50	220-240/50	220-240/50
Energy Consumption	kWh/24h	2,24	2,24	1,84	1,84
Energy Classification		-	-	C	C
Internal Dimension (WxDxH)	mm	653 x 580 x 1680	653 x 580 x 1680	653 x 580 x 1680	653 x 580 x 1680
External Dimension (WxDxH)	mm	777 x 750 x 1900	777 x 750 x 1900	777 x 750 x 1900	777 x 750 x 1900
Packed Dimension (WxDxH)	mm	850 x 770 x 2070	850 x 770 x 2070	850 x 770 x 2070	850 x 770 x 2070
40ft Container Load	pcs	42	42	42	42



TEFCOLD CK7210-I

Counter in stainless steel with cooling storage – with doors or drawers.
Perfect for food preparation and storage in food service industry.

Counter Chillers



CK7410-I

Counter Cooler GN1/1

- Stainless steel
- Ventilated cooling
- Automatic defrost
- Self-closing doors
- Removeable table top with splashback
- Adjustable legs



GN1/1 shelves



Drawers available as separate kit



CK7240-I Counter Cooler GN1/1

- Stainless steel
- Ventilated cooling
- Automatic defrost
- Removeable table top with splashback
- Adjustable legs
- GN1/1 Drawers

B



CK7310-I Counter Cooler GN1/1

- Stainless steel
- Ventilated cooling
- Automatic defrost
- Self-closing doors
- Removeable table top with splashback
- Adjustable legs

B

MODEL		CK7210-I	CK7240-I	CK7310-I	CK7360-I	CK7410-I
Gross / Net Volume	l	282 / 272	282 / 272	417 / 402	417 / 402	553 / 533
Gross / Net Weight	kg	122 / 112	122 / 112	151 / 141	151 / 141	184 / 164
Net Volume Energy Rating	l	205	205	358	358	476
Climate Class		4	4	4	4	4
Temperature Range	°C	-2 to 10	-2 to 10	-2 to 10	-2 to 10	-2 to 10
Door Number & Type		2 hinged self-closing doors	-	3 hinged self-closing doors	-	4 hinged self-closing doors
Shelves Number & Type		2 wire shelves white	-	3 wire shelves white	-	4 wire shelves white
Shelf Dimensions		GN1/1	-	GN1/1	-	GN1/1
Drawers		-	4 GN1/1 drawers	-	6 GN1/1 drawers	-
Feet / Legs		4 adjustable legs	4 adjustable legs	4 adjustable feet	4 adjustable feet	6 adjustable legs
Exterior Finish		SS304	SS304	SS304	SS304	SS304
Interior Finish		SS304	SS304	SS304	SS304	SS304
Thermometer		Yes	Yes	Yes	Yes	Yes
Type of Controller		Electronic	Electronic	Electronic	Electronic	Electronic
Noise Level	db(A)	42	42	42	42	42
Type of Cooling		Ventilated	Ventilated	Ventilated	Ventilated	Ventilated
Type of Defrost		Automatic	Automatic	Automatic	Automatic	Automatic
Refrigerant		R600a	R600a	R600a	R600a	R600a
Refrigerant Charge	g	95	95	95	95	95
Input Power	W	300	300	300	300	300
Voltage / Frequency	V/Hz	220-240/50	220-240/50	220-240/50	220-240/50	220-240/50
Energy Consumption	kWh/24h	1,98	1,98	2,45	2,45	3,96
Energy Classification		B	B	B	B	C
Internal Dimension (WxDxH)	mm	902 x 530 x 589	902 x 530 x 589	1337 x 530 x 589	1337 x 530 x 589	1772 x 530 x 589
External Dimension (WxDxH)	mm	1360 x 700 x 980	1360 x 700 x 980	1795 x 700 x 980	1795 x 700 x 980	2230 x 700 x 980
Packed Dimension (WxDxH)	mm	1405 x 750 x 1010	1405 x 750 x 1010	1830 x 750 x 1010	1830 x 750 x 1010	2260 x 750 x 1010
40ft Container Load	pcs	48	48	38	38	32

Counter Chillers



CK7210-I-SP

Counter Cooler GN1/1

- Stainless steel
- Ventilated cooling
- Automatic defrost
- Self-closing doors
- Removeable table top without splashback
- Adjustable legs

B



Easy access to clean dust filter



Drawers available as separate kit



CK7310-I-SP
Counter Cooler GN1/1

- Stainless steel
- Ventilated cooling
- Automatic defrost
- Self-closing doors
- Removeable table top without splashback
- Adjustable legs



CK7410-I-SP
Counter Cooler GN1/1

- Stainless steel
- Ventilated cooling
- Automatic defrost
- Self-closing doors
- Removeable table top without splashback
- Adjustable legs



MODEL		CK7210-I-SP	CK7310-I-SP	CK7410-I-SP
Gross / Net Volume	l	282 / 272	417 / 402	553 / 533
Gross / Net Weight	kg	122 / 112	151 / 141	184 / 164
Net Volume Energy Rating	l	205	358	476
Climate Class		4	4	4
Temperature Range	°C	-2 to 10	-2 to 10	-2 to 10
Door Number & Type		2 hinged self-closing doors	3 hinged self-closing doors	4 hinged self-closing doors
Shelves Number & Type		2 wire shelves white	3 wire shelves white	4 wire shelves white
Shelf Dimensions		GN1/1	GN1/1	GN1/1
Feet / Legs		4 adjustable legs	4 adjustable feet	6 adjustable legs
Exterior Finish		SS304	SS304	SS304
Interior Finish		SS304	SS304	SS304
Thermometer		Yes	Yes	Yes
Type of Controller		Electronic	Electronic	Electronic
Noise Level	db(A)	42	42	42
Type of Cooling		Ventilated	Ventilated	Ventilated
Type of Defrost		Automatic	Automatic	Automatic
Refrigerant		R600a	R600a	R600a
Refrigerant Charge	g	95	95	95
Input Power	W	300	300	300
Voltage / Frequency	V/Hz	220-240/50	220-240/50	220-240/50
Energy Consumption	kWh/24h	1,98	2,45	3,96
Energy Classification		B	B	C
Internal Dimension (WxDxH)	mm	902 x 530 x 589	1337 x 530 x 589	1772 x 530 x 589
External Dimension (WxDxH)	mm	1360 x 700 x 880	1795 x 700 x 880	2230 x 700 x 880
Packed Dimension (WxDxH)	mm	1405 x 750 x 920	1830 x 750 x 920	2260 x 750 x 920
40ft Container Load	pcs	48	38	32

Counter Freezers



CF7410-P

Counter Freezer GN1/1

- Stainless steel
- Ventilated cooling
- Automatic defrost
- Self-closing doors
- Removeable table top with splashback
- Adjustable legs

D



GN1/1 shelves



Available without splash back



CF7310-P Counter Freezer GN1/1

- Stainless steel
- Ventilated cooling
- Automatic defrost
- Self-closing doors
- Removeable table top with splashback
- Adjustable legs

D



CF7210-P/-SP BACK Counter Freezer GN1/1

- Stainless steel
- Ventilated cooling
- Automatic defrost
- Self-closing doors
- Adjustable legs

D

MODEL		CF7210-P	CF7210-P/-SP BACK	CF7310-P	CF7410-P
Gross / Net Volume	l	282 / 272	282 / 272	417 / 402	553 / 533
Gross / Net Weight	kg	130 / 120	130 / 120	162 / 152	199 / 179
Net Volume Energy Rating	l	205	205	358	476
Climate Class		4	4	4	4
Temperature Range	°C	-20 to -10	-20 to -10	-20 to -10	-20 to -10
Door Number & Type		2 hinged self-closing doors	2 hinged self-closing doors	3 hinged self-closing doors	4 hinged self-closing doors
Shelves Number & Type		2 wire shelves white	2 wire shelves white	3 wire shelves white	4 wire shelves white
Shelf Dimensions		GN1/1	GN1/1	GN1/1	GN1/1
Feet / Legs		4 adjustable legs	4 adjustable legs	4 adjustable legs	6 adjustable legs
Exterior Finish		SS304	SS304	SS304	SS304
Interior Finish		SS304	SS304	SS304	SS304
Thermometer		Yes	Yes	Yes	Yes
Type of Controller		Electronic	Electronic	Electronic	Electronic
Noise Level	db(A)	42	42	42	42
Type of Cooling		Ventilated	Ventilated	Ventilated	Ventilated
Type of Defrost		Automatic	Automatic	Automatic	Automatic
Refrigerant		R290	R290	R290	R290
Refrigerant Charge	g	90	90	90	230
Input Power	W	470	470	570	660
Voltage / Frequency	V/Hz	220-240/50	220-240/50	220-240/50	220-240/50
Energy Consumption	kWh/24h	6,95	6,95	8,76	10,26
Energy Classification		D	D	D	D
Internal Dimension (WxDxH)	mm	902 x 530 x 589	902 x 530 x 589	1337 x 530 x 589	1772 x 530 x 589
External Dimension (WxDxH)	mm	1360 x 700 x 980	1360 x 700 x 880	1795 x 700 x 980	2230 x 700 x 980
Packed Dimension (WxDxH)	mm	1405 x 750 x 1010	1405 x 750 x 920	1830 x 750 x 1010	2260 x 750 x 1010
40ft Container Load	pcs	48	48	38	32

Snack Counter Chiller



SK6410-I

Snack Counter Cooler

- Stainless steel
- Ventilated cooling
- Automatic defrost
- Self-closing doors
- Removeable table top
- Adjustable legs



Easy access to clean dust filter



Drawers available as separate kit



SK6210-I Snack Counter Cooler

- Stainless steel
- Ventilated cooling
- Automatic defrost
- Self-closing doors
- Removeable table top
- Adjustable legs

B



SK6310-I/+SP Snack Counter Cooler

- Stainless steel
- Ventilated cooling
- Automatic defrost
- Self-closing doors
- Removeable table top with splashback
- Adjustable legs

B

MODEL		SK6210-I	SK6310-I	SK6310-I/+SP	SK6410-I	SK6410-I/+SP
Gross / Net Volume	l	240 / 230	360 / 345	360 / 345	480 / 460	480 / 460
Gross / Net Weight	kg	104 / 94	130 / 120	130 / 120	154 / 144	154 / 144
Climate Class		4	4	4	4	4
Temperature Range	°C	-2 to 10	-2 to 10	-2 to 10	-2 to 10	-2 to 10
Door Number & Type		2 hinged self-closing doors	3 hinged self-closing doors	3 hinged self-closing doors	4 hinged self-closing doors	4 hinged self-closing doors
Shelves Number & Type		2 wire shelves white	3 wire shelves white	3 wire shelves white	4 wire shelves white	4 wire shelves white
Shelf Dimensions		328 x 430 mm	328 x 430 mm	328 x 430 mm	328 x 430 mm	328 x 430 mm
Feet / Legs		4 adjustable legs	4 adjustable legs	4 adjustable legs	6 adjustable legs	6 adjustable legs
Exterior Finish		SS304	SS304	SS304	SS304	SS304
Interior Finish		SS304	SS304	SS304	SS304	SS304
Thermometer		Yes	Yes	Yes	Yes	Yes
Type of Controller		Electronic	Electronic	Electronic	Electronic	Electronic
Noise Level	db(A)	42	42	42	42	42
Type of Cooling		Ventilated	Ventilated	Ventilated	Ventilated	Ventilated
Type of Defrost		Automatic	Automatic	Automatic	Automatic	Automatic
Refrigerant		R600a	R600a	R600a	R600a	R600a
Refrigerant Charge	g	95	95	95	95	95
Input Power	W	300	300	300	300	300
Voltage / Frequency	V/Hz	220-240/50	220-240/50	220-240/50	220-240/50	220-240/50
Energy Consumption	kWh/24h	1,96	2,25	2,25	3,83	3,83
Energy Classification		B	B	B	C	C
Internal Dimension (WxDxH)	mm	902 x 430 x 589	1337 x 430 x 589	1337 x 430 x 589	1772 x 430 x 589	1772 x 430 x 589
External Dimension (WxDxH)	mm	1360 x 600 x 825	1795 x 600 x 825	1795 x 600 x 925	2230 x 600 x 825	2230 x 600 x 925
Packed Dimension (WxDxH)	mm	1400 x 640 x 920	1830 x 640 x 920	1830 x 640 x 1020	2250 x 640 x 920	2250 x 640 x 1020
40ft Container Load	pcs	52	32	32	36	36

Saladettes



SA910BT-P

Saladette Freezer Counter GN1/1

- Freezing unit
- Stainless steel
- Fan assisted cooling
- Digital controller and temperature display
- Adjustable feet

E



GN1/1 shelves



SA912-I
Saladette Counter GN1/1

- Stainless steel
- Fan assisted cooling
- Automatic defrost
- Adjustable feet



SA914-I
Saladette Counter GN1/1

- Stainless steel
- Fan assisted cooling
- Automatic defrost
- Drawer(s)
- Adjustable feet



MODEL		SA910BT-P	SA910-I	SA912-I	SA914-I
Gross / Net Volume	l	260 / 230	260 / 230	260 / 230	260 / 230
Gross / Net Weight	kg	96 / 86	82 / 72	91 / 81	99 / 89
Net Volume Energy Rating	l	201	201	161	130
Climate Class		4	4	4	4
Temperature Range	°C	-20 to -10	2 to 10	2 to 10	2 to 10
Door Number & Type		2 hinged solid doors	2 hinged solid doors	1 hinged solid door	4
Shelves Number & Type		2 wire shelves white	2 wire shelves white	1 wire shelves white	wire shelves white
Shelf Dimensions		GN1/1	GN1/1	GN1/1	-
Drawers		-	-	2 GN1/1 drawers	4 GN1/1 drawers
Feet / Legs		4 adjustable feet	4 adjustable feet	4 adjustable feet	4 adjustable feet
Exterior Finish		SS304	SS304	SS304	SS304
Interior Finish		SS304	SS304	SS304	SS304
Thermometer		Yes	Yes	Yes	Yes
Type of Controller		Electronic	Electronic	Electronic	Electronic
Noise Level	db(A)	42	42	42	42
Type of Cooling		Fan assisted	Fan assisted	Fan assisted	Fan assisted
Type of Defrost		Manual	Automatic	Automatic	Automatic
Refrigerant		R290	R600a	R600a	R600a
Refrigerant Charge	g	90	68	68	68
Input Power	W	280	155	155	155
Voltage / Frequency	V/Hz	220-240/50	220-240/50	220-240/50	220-240/50
Energy Consumption	kWh/24h	8,13	2,56	2,42	2,25
Energy Classification		E	C	C	C
Internal Dimension (WxDxH)	mm	830 x 515 x 500	830 x 515 x 500	830 x 515 x 500	830 x 515 x 500
External Dimension (WxDxH)	mm	943 x 700 x 877	900 x 700 x 877	900 x 700 x 877	900 x 700 x 877
Packed Dimension (WxDxH)	mm	980 x 770 x 1040	980 x 770 x 1040	980 x 770 x 1040	980 x 770 x 1040
40ft Container Load	pcs	72	72	72	72

Saladettes



SA1365-I S/S

Saladette Counter GN1/1

- Stainless steel
- Fan assisted cooling
- Digital controller and temperature display
- Automatic defrost
- Adjustable feet



GN1/1 shelves



GN1/1 drawers



SA1365-I
Saladette Counter GN1/1

- Stainless steel
- Open top for GN pans
- Fan assisted cooling
- Automatic defrost
- Adjustable feet



SA920-I
Saladette Counter GN1/1

- Stainless steel
- Open top for GN pans
- Fan assisted cooling
- Digital controller and temperature display
- Automatic defrost
- Adjustable feet



MODEL		SA1045-I	SA1365-I	SA1365-I S/S	SA920-I
Gross / Net Volume	l	270 / 240	400 / 368	400 / 368	260 / 230
Gross / Net Weight	kg	91 / 80	120 / 110	120 / 110	81 / 70
Net Volume Energy Rating	l		308	308	
Climate Class		4	4	4	4
Temperature Range	°C	2 to 10	2 to 10	2 to 10	2 to 10
Door Number & Type		2 hinged solid doors	3 hinged solid doors	3 hinged solid doors	2 hinged solid doors
Shelves Number & Type		2 wire shelves white	3 wire shelves white	3 wire shelves white	2 wire shelves white
Shelf Dimensions		GN1/1	GN1/1	GN1/1	GN1/1
Feet / Legs		4 adjustable feet	4 adjustable feet	4 adjustable feet	4 adjustable feet
Exterior Finish		SS304	SS304	SS304	SS304
Interior Finish		SS304	SS304	SS304	SS304
Thermometer		Yes	Yes	Yes	Yes
Type of Controller		Electronic	Electronic	Electronic	Electronic
Noise Level	db(A)	42	42	42	42
Type of Cooling		Fan assisted	Fan assisted	Fan assisted	Fan assisted
Type of Defrost		Automatic	Automatic	Automatic	Automatic
Refrigerant		R600a	R600a	R600a	R600a
Refrigerant Charge	g	68	110	110	68
Input Power	W	175	235	235	155
Voltage / Frequency	V/Hz	220-240/50	220-240/50	220-240/50	220-240/50
Energy Consumption	kWh/24h	2,5	2,6	3,15	2,1
Energy Classification		-	C	C	-
Internal Dimension (WxDxH)	mm	975 x 515 x 500	1295 x 515 x 500	1295 x 515 x 500	830 x 515 x 500
External Dimension (WxDxH)	mm	1045 x 700 x 877	1365 x 700 x 877	1365 x 700 x 877	900 x 700 x 877
Packed Dimension (WxDxH)	mm	1120 x 770 x 1040	1440 x 770 x 1040	1440 x 770 x 1040	980 x 770 x 1040
40ft Container Load	pcs	72	48	48	72

Sandwich Counters



SS8300-P

Sandwich Preparation Counter GN1/1

- Stainless steel
- Cooling well for GN1/3 pans
- Ventilated cooling
- Optimized airflow for stable temperature
- Automatic defrost
- Self-closing doors
- Adjustable legs



GN1/3 cooling well



Drawers as option



SS7200-P

Sandwich Preparation Counter GN1/1

- Stainless steel
- Cooling well for GN1/3 pans
- Ventilated cooling
- Optimized airflow for stable temperature
- Automatic defrost
- Self-closing doors
- Adjustable legs



SS7300-P

Sandwich Preparation Counter GN1/1

- Stainless steel
- Cooling well for GN1/3 pans
- Ventilated cooling
- Optimized airflow for stable temperature
- Automatic defrost
- Self-closing doors
- Adjustable legs

MODEL		SS7200-P	SS7300-P	SS8200-P	SS8300-P
Gross / Net Volume	l	320 / 297	429 / 407	362 / 337	520 / 497
Gross / Net Weight	kg	140 / 130	180 / 155	163 / 153	201 / 191
Climate Class		4	4	4	4
Temperature Range	°C	2 to 10	2 to 10	2 to 10	2 to 10
Door Number & Type		2 hinged self-closing doors	3 hinged self-closing doors	2 hinged self-closing doors	3 hinged self-closing doors
Shelves Number & Type		2 wire shelves white	3 wire shelves white	2 wire shelves white	3 wire shelves white
Shelf Dimensions		GN1/1	GN1/1	400 x 600 mm	400 x 600 mm
Feet / Legs		4 adjustable legs	4 adjustable legs	4 adjustable legs	6 adjustable legs
Exterior Finish		SS304	SS304	SS304	SS304
Interior Finish		SS304	SS304	SS304	SS304
Thermometer		Yes	Yes	Yes	Yes
Type of Controller		Electronic	Electronic	Electronic	Electronic
Noise Level	db(A)	42	42	42	42
Type of Cooling		Ventilated	Ventilated	Ventilated	Ventilated
Type of Defrost		Automatic	Automatic	Automatic	Automatic
Refrigerant		R290	R290	R290	R290
Refrigerant Charge	g	95	95	95	95
Input Power	W	300	300	300	300
Voltage / Frequency	V/Hz	220-240/50	220-240/50	220-240/50	220-240/50
Energy Consumption	kWh/24h	2,7	2,8	2,8	3,2
Internal Dimension (WxDxH)	mm	902 x 530 x 589	1337 x 530 x 589	1052 x 630 x 589	1562 x 630 x 589
External Dimension (WxDxH)	mm	1360 x 700 x 1080	1795 x 700 x 1080	1510 x 800 x 1080	2020 x 800 x 1080
Packed Dimension (WxDxH)	mm	1405 x 750 x 1010	1830 x 750 x 1010	1550 x 840 x 1150	2050 x 840 x 1150
40ft Container Load	pcs	48	38	30	28

Sandwich Counters



SS1435-I

Sandwich Preparation Counter GN1/1

- Stainless steel
- Cooling well for GN1/6 pans
- Fan assisted cooling
- Automatic defrost
- Doors
- Adjustable legs



GN1/6 cooling well



Drawers as option



SS920-I

Sandwich Preparation Counter GN1/1

- Stainless steel
- Cooling well for GN1/6 pans
- Fan assisted cooling
- Automatic defrost
- Doors
- Adjustable legs

DID YOU KNOW?

We have more than 30 years market experience and over 2000 customers across 100 countries. We have the expertise to help your with cooling advise to make your business successful.

MODEL	SS1435-I	SS920-I
Gross / Net Volume	l 348 / 320	228 / 201
Gross / Net Weight	kg 128 / 118	94 / 72
Climate Class	4	4
Temperature Range	°C 2 to 10	2 to 10
Door Number & Type	3 hinged solid doors	2 hinged solid doors
Shelves Number & Type	3 wire shelves white	2 wire shelves white
Shelf Dimensions	GN1/1	GN1/1
Feet / Legs	4 adjustable feet	4 adjustable feet
Exterior Finish	SS304	SS304
Interior Finish	SS304	SS304
Thermometer	Yes	Yes
Type of Controller	Electronic	Electronic
Noise Level	db(A) 42	42
Type of Cooling	Fan assisted	Fan assisted
Type of Defrost	Automatic	Automatic
Refrigerant	R600a	R600a
Refrigerant Charge	g 110	68
Input Power	W 175	155
Voltage / Frequency	V/Hz 220-240/50	220-240/50
Energy Consumption	kWh/24h 2,4	2
Internal Dimension (WxDxH)	mm 1295 x 515 x 500	830 x 515 x 500
External Dimension (WxDxH)	mm 1365 x 700 x 950	900 x 700 x 950
Packed Dimension (WxDxH)	mm 1400 x 770 x 1170	980 x 770 x 1170
40ft Container Load	pcs 48	72

Bakery Counters



BK310-I

Bakery Counter

- Stainless steel
- Euronorm cupboard
- Ventilated cooling
- Automatic defrost
- Self-closing doors
- Removeable table top
- Adjustable legs



Easy access to clean dust filter



Drawers available as separate kit



BK210-I

Bakery Counter

- Stainless steel
- Euronorm cupboard
- Ventilated cooling
- Automatic defrost
- Self-closing doors
- Removeable table top
- Adjustable legs

B

DID YOU KNOW?

With a customer login to TEFCOLD Webshop you will find: Product prices, product specifications, spare part lists and prices, stock levels, product photos, exploded view drawings, freight prices as well as a MediaBank access.

MODEL		BK210-I	BK310-I
Gross / Net Volume	l	390 / 380	580 / 565
Gross / Net Weight	kg	131 / 121	170 / 150
Net Volume Energy Rating	l	290	444
Climate Class		4	4
Temperature Range	°C	2 to 10	2 to 10
Door Number & Type		2 hinged self-closing doors	3 hinged self-closing doors
Shelves Number & Type		2 wire shelves white	3 wire shelves white
Shelf Dimensions		400 x 600 mm	400 x 600 mm
Feet / Legs		4 adjustable legs	6 adjustable legs
Exterior Finish		SS304	SS304
Interior Finish		SS304	SS304
Thermometer		Yes	Yes
Type of Controller		Electronic	Electronic
Noise Level	db(A)	42	42
Type of Cooling		Ventilated	Ventilated
Type of Defrost		Automatic	Automatic
Refrigerant		R600a	R600a
Refrigerant Charge	g	95	95
Input Power	W	300	300
Voltage / Frequency	V/Hz	220-240/50	220-240/50
Energy Consumption	kWh/24h	1,94	3,65
Energy Classification		B	C
Internal Dimension (WxDxH)	mm	1052 x 630 x 589	1562 x 630 x 589
External Dimension (WxDxH)	mm	1510 x 800 x 880	2020 x 800 x 880
Packed Dimension (WxDxH)	mm	1550 x 840 x 920	2050 x 840 x 920
40ft Container Load	pcs	30	28

Pizza Counters



PT930-I

Pizza Counter GN1/1

- Stainless steel
- Granite table top
- Cooling well for GN1/6 pans
- Fan assisted cooling
- Automatic defrost
- Doors
- Adjustable feet



GN1/6 refrigerated cooling well



Drawers as option



PT1365-I
Pizza Counter GN1/1

- Stainless steel
- Granite table top
- Fan assisted cooling
- Automatic defrost
- Doors
- Adjustable feet



PT920-I
Pizza Counter GN1/1

- Stainless steel
- Granite table top
- Cooling well for GN1/6 pans
- Fan assisted cooling
- Automatic defrost
- Doors
- Adjustable feet



MODEL		PT1365-I	PT920-I	PT930-I
Gross / Net Volume	l	400 / 368	260 / 230	400 / 368
Gross / Net Weight	kg	218 / 208	115 / 103	175 / 155
Net Volume Energy Rating	l	308		
Climate Class		4	4	4
Temperature Range	°C	2 to 10	2 to 10	2 to 10
Door Number & Type		3 hinged solid doors	2 hinged solid doors	3 hinged solid doors
Shelves Number & Type		3 wire shelves white	2 wire shelves white	3 wire shelves white
Shelf Dimensions		GN1/1	GN1/1	GN1/1
Feet / Legs		4 adjustable feet	4 adjustable feet	4 adjustable feet
Exterior Finish		SS304	SS304	SS304
Interior Finish		SS304	SS304	SS304
Thermometer		Yes	Yes	Yes
Type of Controller		Electronic	Electronic	Electronic
Noise Level	db(A)	42	42	42
Type of Cooling		Fan assisted	Fan assisted	Fan assisted
Type of Defrost		Automatic	Automatic	Automatic
Refrigerant		R600a	R600a	R600a
Refrigerant Charge	g	110	68	110
Input Power	W	175	155	175
Voltage / Frequency	V/Hz	220-240/50	220-240/50	220-240/50
Energy Consumption	kWh/24h	3	2,2	2,4
Energy Classification		C	-	-
Internal Dimension (WxDxH)	mm	1295 x 515 x 500	830 x 515 x 500	1295 x 515 x 500
External Dimension (WxDxH)	mm	1365 x 700 x 1457	900 x 700 x 1100	1365 x 700 x 1100
Packed Dimension (WxDxH)	mm	1440 x 770 x 1200	980 x 770 x 1250	1440 x 770 x 1250
40ft Container Load	pcs	48	72	48

Pizza Counters



PT1310-I

Pizza Table

- Stainless steel
- Ambient temperature drawers section
- Guides for 7 pizza trays in each door (400x600 mm)
- Granite table top
- Ventilated cooling
- Automatic defrost
- Self-closing doors
- Adjustable legs

B



Granite table top



Guides for pizza trays



PT1200-I Pizza Table

- Stainless steel
- Guides for 7 pizza trays in each door (400x600 mm)
- VK38-150 Topping unit for GN1/3 pans
- Granite table top
- Ventilated cooling
- Automatic defrost
- Self-closing doors
- Adjustable legs

B



PT1300-I Pizza Table

- Stainless steel
- Guides for 7 pizza trays in each door (400x600 mm)
- Granite table top
- Ventilated cooling
- Automatic defrost
- Self-closing doors
- Adjustable legs

C

MODEL		PT1200-I	PT1300-I	PT1310-I
Gross / Net Volume	l	390 / 370	580 / 565	390 / 370
Gross / Net Weight	kg	253 / 243	328 / 318	330 / 320
Net Volume Energy Rating	l	290	444	290
Climate Class		4	4	4
Temperature Range	°C	2 to 10	2 to 10	2 to 10
Door Number & Type		2 hinged self-closing doors	3 hinged self-closing doors	2 hinged self-closing doors
Shelves Number & Type		guides for pizza trays	guides for pizza trays	guides for pizza trays
Shelf Dimensions		400 x 600 mm	400 x 600 mm	400 x 600 mm
Drawers		-	-	7 dough drawers
Feet / Legs		4 adjustable legs	6 adjustable legs	8 adjustable legs
Exterior Finish		SS304	SS304	SS304
Interior Finish		SS304	SS304	SS304
Thermometer		Yes	Yes	Yes
Type of Controller		Electronic	Electronic	Electronic
Noise Level	db(A)	42	42	42
Type of Cooling		Ventilated	Ventilated	Ventilated
Type of Defrost		Automatic	Automatic	Automatic
Refrigerant		R600a	R600a	R600a
Refrigerant Charge	g	95	95	95
Input Power	W	300	300	300
Voltage / Frequency	V/Hz	220-240/50	220-240/50	220-240/50
Energy Consumption	kWh/24h	2,32	3,65	2,41
Energy Classification		B	C	B
Internal Dimension (WxDxH)	mm	1052 x 630 x 589	1562 x 630 x 589	1052 x 630 x 589
External Dimension (WxDxH)	mm	1510 x 800 x 1445	2045 x 800 x 1445	2045 x 800 x 1445
Packed Dimension (WxDxH)	mm	1550 x 840 x 1050	2050 x 840 x 1050	2050 x 840 x 1050
40ft Container Load	pcs	28	28	28

Vitrine Coolers



VK33-200-I

Vitrine Cooler GN1/4

- Stainless steel
- Accepts GN1/4 pans (Not supplied)
- Static cooling
- Glass structure for protection of food
- Adjustable feet



Glass structure for protection of food



Stainless steel lid as option



VK33-120-I Vitrine Cooler GN1/4

- Stainless steel
- Accepts GN1/4 pans (Not supplied)
- Static cooling
- Glass structure for protection of food
- Adjustable feet

VK33-160-I Vitrine Cooler GN1/4

- Stainless steel
- Accepts GN1/4 pans (Not supplied)
- Static cooling
- Glass structure for protection of food
- Adjustable feet

MODEL		VK33-120-I	VK33-140 I	VK33-150-I	VK33-160-I	VK33-180-I	VK33-200-I
Gross / Net Volume	l	32 / 32	40 / 40	44 / 44	48 / 48	55 / 55	63 / 63
Gross / Net Weight	kg	45 / 40	48 / 43	50 / 45	55 / 50	58 / 53	63 / 58
Climate Class		4	4	4	4	4	4
Temperature Range	°C	2 to 10	2 to 10	2 to 10	2 to 10	2 to 10	2 to 10
Lid Number & Type		-	-	-	-	-	-
Number of dividers	pcs	5	6	7	7	8	10
Feet / Legs		4 adjustable feet	4 adjustable feet	4 adjustable feet	4 adjustable feet	4 adjustable feet	4 adjustable feet
Exterior Finish		SS304	SS304	SS304	SS304	SS304	SS304
Interior Finish		SS304	SS304	SS304	SS304	SS304	SS304
Thermometer		Yes	Yes	Yes	Yes	Yes	Yes
Type of Controller		Electronic	Electronic	Electronic	Electronic	Electronic	Electronic
Noise Level	db(A)	47	47	47	47	47	47
Type of Cooling		Static	Static	Static	Static	Static	Static
Type of Defrost		Manual	Manual	Manual	Manual	Manual	Manual
Refrigerant		R600a	R600a	R600a	R600a	R600a	R600a
Refrigerant Charge	g	40	40	40	40	40	40
Input Power	W	112	112	112	112	112	112
Voltage / Frequency	V/Hz	220-240/50	220-240/50	220-240/50	220-240/50	220-240/50	220-240/50
Energy Consumption	kWh/h	0,16	0,16	0,16	0,17	0,18	0,18
Internal Dimension (WxDxH)	mm	845 x 245 x 155	1045 x 245 x 155	1145 x 245 x 155	1245 x 245 x 155	1445 x 245 x 155	1645 x 245 x 155
External Dimension (WxDxH)	mm	1200 x 335 x 225	1400 x 335 x 225	1500 x 335 x 225	1600 x 335 x 225	1800 x 335 x 225	2000 x 335 x 225
Packed Dimension (WxDxH)	mm	1280 x 380 x 310	1480 x 380 x 310	1580 x 380 x 310	1680 x 380 x 310	1880 x 380 x 310	2080 x 380 x 310
40ft Container Load	pcs	250	250	250	250	250	250

Vitrine Coolers



VK33-200-I S/S

Vitrine Cooler GN1/4

- Stainless steel
- Accepts GN1/4 pans (Not supplied)
- Static cooling
- Stainless steel lid
- Adjustable feet



Glass structure as option



Stainless steel lid for protection of food



VK33-120-I S/S

Vitrine Cooler GN1/4

- Stainless steel
- Accepts GN1/4 pans (Not supplied)
- Static cooling
- Stainless steel lid
- Adjustable feet

VK33-150-I S/S

Vitrine Cooler GN1/4

- Stainless steel
- Accepts GN1/4 pans (Not supplied)
- Static cooling
- Stainless steel lid
- Adjustable feet

MODEL		VK33-120-I S/S	VK33-150-I S/S	VK33-180-I S/S	VK33-200-I S/S
Gross / Net Volume	l	32 / 32	44 / 44	55 / 55	63 / 63
Gross / Net Weight	kg	45 / 40	50 / 45	58 / 53	63 / 58
Climate Class		4	4	4	4
Temperature Range	°C	2 to 10	2 to 10	2 to 10	2 to 10
Lid Number & Type		SS304 lid	SS304 lid	SS304 lid	SS304 lid
Number of dividers	pcs	5	7	8	10
Feet / Legs		4 adjustable feet	4 adjustable feet	4 adjustable feet	4 adjustable feet
Exterior Finish		SS304	SS304	SS304	SS304
Interior Finish		SS304	SS304	SS304	SS304
Thermometer		Yes	Yes	Yes	Yes
Type of Controller		Electronic	Electronic	Electronic	Electronic
Noise Level	db(A)	47	47	47	47
Type of Cooling		Static	Static	Static	Static
Type of Defrost		Manual	Manual	Manual	Manual
Refrigerant		R600a	R600a	R600a	R600a
Refrigerant Charge	g	40	40	40	40
Input Power	W	112	112	112	112
Voltage / Frequency	V/Hz	220-240/50	220-240/50	220-240/50	220-240/50
Energy Consumption	kWh/h	0,16	0,16	0,18	0,18
Internal Dimension (WxDxH)	mm	845 x 245 x 155	1145 x 245 x 155	1445 x 245 x 155	1645 x 245 x 155
External Dimension (WxDxH)	mm	1200 x 335 x 260	1500 x 335 x 260	1800 x 335 x 260	2000 x 335 x 260
Packed Dimension (WxDxH)	mm	1280 x 380 x 310	1580 x 380 x 310	1880 x 380 x 310	2080 x 380 x 310
40ft Container Load	pcs	250	250	250	250

Vitrine Coolers



VK38-200-I

Vitrine Cooler GN1/3

- Stainless steel
- Accepts GN1/3 pans (Not supplied)
- Static cooling
- Glass structure for protection of food
- Adjustable feet



Glass structure for protection of food



Stainless steel lid as option



VK38-120-I Vitrine Cooler GN1/3

- Stainless steel
- Accepts GN1/3 pans (Not supplied)
- Static cooling
- Glass structure for protection of food
- Adjustable feet

VK38-150-I Vitrine Cooler GN1/3

- Stainless steel
- Accepts GN1/3 pans (Not supplied)
- Static cooling
- Glass structure for protection of food
- Adjustable feet

MODEL		VK38-120-I	VK38-150-I	VK38-160-I	VK38-180-I	VK38-200-I
Gross / Net Volume	l	40 / 40	54 / 54	59 / 59	69 / 69	78 / 78
Gross / Net Weight	kg	45 / 40	56 / 51	61 / 56	74 / 69	78 / 73
Climate Class		4	4	4	4	4
Temperature Range	°C	2 to 10	2 to 10	2 to 10	2 to 10	2 to 10
Lid Number & Type		-	-	-	-	-
Number of dividers	pcs	7	9	10	10	12
Feet / Legs		4 adjustable feet	4 adjustable feet	4 adjustable feet	4 adjustable feet	4 adjustable feet
Exterior Finish		SS304	SS304	SS304	SS304	SS304
Interior Finish		SS304	SS304	SS304	SS304	SS304
Thermometer		Yes	Yes	Yes	Yes	Yes
Type of Controller		Electronic	Electronic	Electronic	Electronic	Electronic
Noise Level	db(A)	47	47	47	47	47
Type of Cooling		Static	Static	Static	Static	Static
Type of Defrost		Manual	Manual	Manual	Manual	Manual
Refrigerant		R600a	R600a	R600a	R600a	R600a
Refrigerant Charge	g	40	40	40	40	40
Input Power	W	112	112	112	112	112
Voltage / Frequency	V/Hz	220-240/50	220-240/50	220-240/50	220-240/50	220-240/50
Energy Consumption	kWh/h	0,16	0,17	0,18	0,19	0,19
Internal Dimension (WxDxH)	mm	845 x 305 x 155	1145 x 305 x 155	1245 x 305 x 155	1445 x 305 x 155	1645 x 305 x 155
External Dimension (WxDxH)	mm	1200 x 395 x 225	1500 x 395 x 225	1600 x 395 x 225	1800 x 395 x 225	2000 x 395 x 225
Packed Dimension (WxDxH)	mm	1280 x 440 x 310	1580 x 440 x 310	1680 x 440 x 310	1880 x 440 x 310	2080 x 440 x 310
40ft Container Load	pcs	250	250	250	250	250

Vitrine Coolers



VK38-120-I S/S

Vitrine Cooler GN1/3

- Stainless steel
- Accepts GN1/3 pans (Not supplied)
- Static cooling
- Stainless steel lid
- Adjustable feet



Glass structure as option



Stainless steel lid for protection of food



VK38-150-I S/S

Vitrine Cooler GN1/3

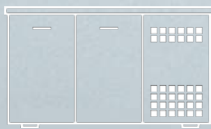
- Stainless steel
- Accepts GN1/3 pans (Not supplied)
- Static cooling
- Stainless steel lid
- Adjustable feet

VK38-160-I S/S

Vitrine Cooler GN1/3

- Stainless steel
- Accepts GN1/3 pans (Not supplied)
- Static cooling
- Stainless steel lid
- Adjustable feet

MODEL		VK38-120-I S/S	VK38-150-I S/S	VK38-160-I S/S	VK38-180-I S/S	VK38-200-I S/S
Gross / Net Volume	l	40 / 40	54 / 54	59 / 59	69 / 69	78 / 78
Gross / Net Weight	kg	45 / 40	56 / 51	61 / 56	74 / 69	78 / 73
Climate Class		4	4	4	4	4
Temperature Range	°C	2 to 10	2 to 10	2 to 10	2 to 10	2 to 10
Lid Number & Type		SS304 lid	SS304 lid	SS304 lid	SS304 lid	SS304 lid
Number of dividers	pcs	7	9	10	10	12
Feet / Legs		4 adjustable feet	4 adjustable feet	4 adjustable feet	4 adjustable feet	4 adjustable feet
Exterior Finish		SS304	SS304	SS304	SS304	SS304
Interior Finish		SS304	SS304	SS304	SS304	SS304
Thermometer		Yes	Yes	Yes	Yes	Yes
Type of Controller		Electronic	Electronic	Electronic	Electronic	Electronic
Noise Level	db(A)	47	47	47	47	47
Type of Cooling		Static	Static	Static	Static	Static
Type of Defrost		Manual	Manual	Manual	Manual	Manual
Refrigerant		R600a	R600a	R600a	R600a	R600a
Refrigerant Charge	g	40	40	40	40	40
Input Power	W	112	112	112	112	112
Voltage / Frequency	V/Hz	220-240/50	220-240/50	220-240/50	220-240/50	220-240/50
Energy Consumption	kWh/h	0,16	0,17	0,18	0,19	0,19
Internal Dimension (WxDxH)	mm	845 x 305 x 155	1145 x 305 x 155	1245 x 305 x 155	1445 x 305 x 155	1645 x 305 x 155
External Dimension (WxDxH)	mm	1200 x 395 x 260	1500 x 395 x 260	1600 x 395 x 260	1800 x 395 x 260	2000 x 395 x 260
Packed Dimension (WxDxH)	mm	1280 x 440 x 310	1580 x 440 x 310	1680 x 440 x 310	1880 x 440 x 310	2080 x 440 x 310
40ft Container Load	pcs	250	250	250	250	250

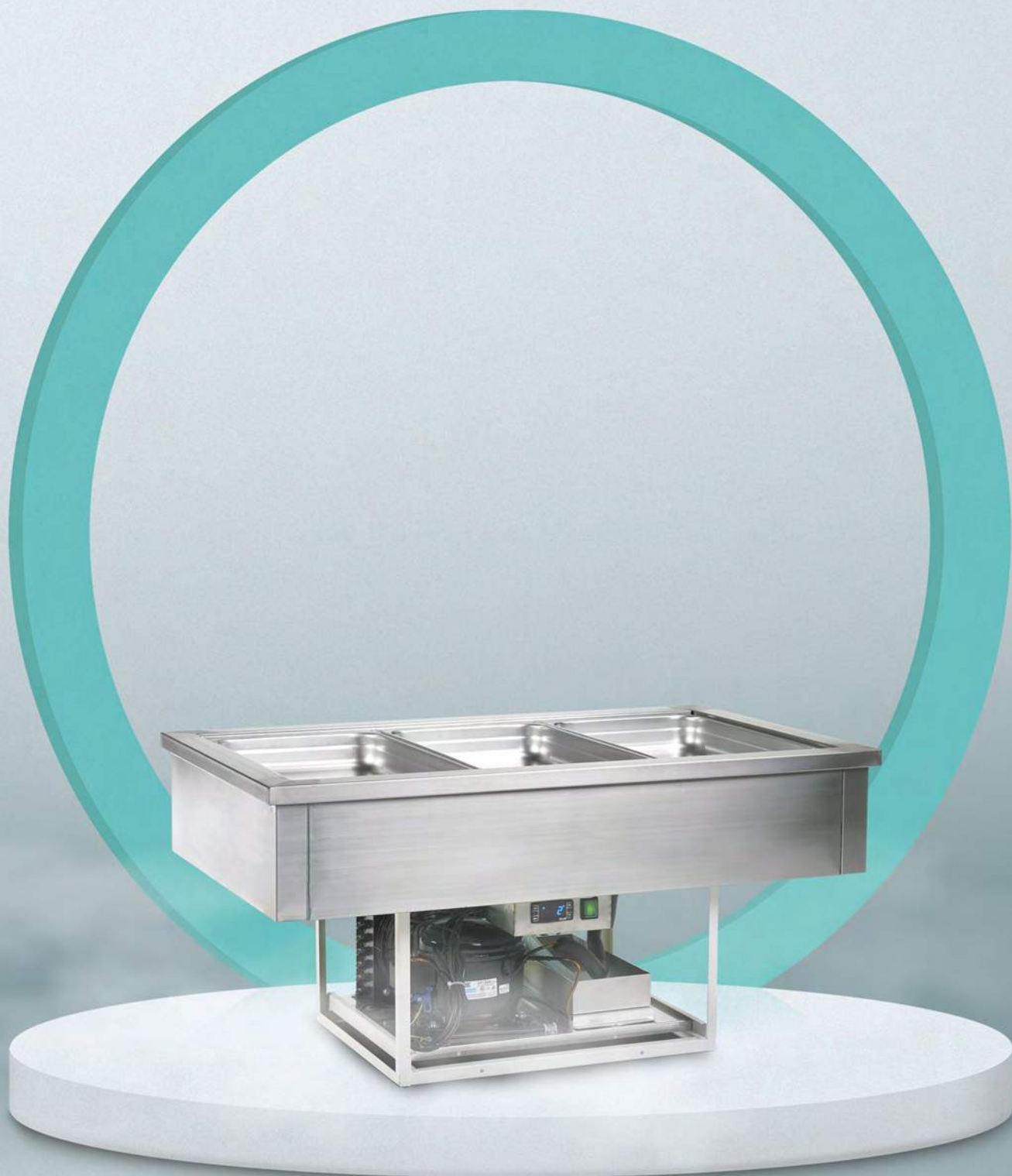


COOLING WELLS

Gastronorm Cooling Wells

TEFCOLD cooling wells are dimensioned for use in 1/1 Gastronorm canteens, and come in four different sizes. Made of high quality SS304 stainless steel, with electronic

thermostats and ventilated cooling, these products are ideal for integrating into a buffet in restaurants and professional kitchens.



TEFCOLD CW3-I

Cooling well in stainless steel with ventilated cooling.
Perfect build in units that can be used for buffet – designed for GN 1/1 pans.

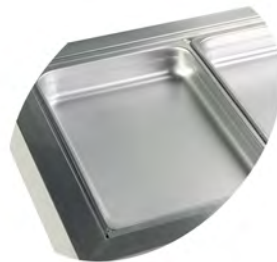
Cooling Wells



CW5-I/V

Cooling Well GN1/1

- Stainless steel
- Accepts GN1/1 pans (Not supplied)
- Ventilated cooling
- Electronic thermostat



Designed for GN1/1 pans, not supplied



Ventilated cooling



CW2-I/V

Cooling Well GN1/1

- Stainless steel
- Accepts GN1/1 pans (Not supplied)
- Ventilated cooling
- Electronic thermostat

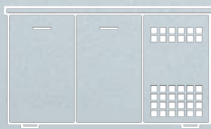


CW3-I/V

Cooling Well GN1/1

- Stainless steel
- Accepts GN1/1 pans (Not supplied)
- Ventilated cooling
- Electronic thermostat

MODEL		CW2-I/V	CW3-I/V	CW4-I/V	CW5-I/V
Capacity GN Pans		2	3	4	5
Gross / Net Volume	l	111 / 110	166 / 164	221 / 218	277 / 273
Gross / Net Weight	kg	49 / 46	55 / 52	80 / 75	91 / 86
Climate Class		4	4	4	4
Temperature Range	°C	2 to 8	2 to 8	2 to 8	2 to 8
Number of dividers	pcs	3	4	5	6
Exterior Finish		SS304	SS304	SS304	SS304
Interior Finish		SS304	SS304	SS304	SS304
Thermometer		Yes	Yes	Yes	Yes
Type of Controller		Electronic	Electronic	Electronic	Electronic
Noise Level	db(A)	42	42	42	42
Type of Cooling		Ventilated	Ventilated	Ventilated	Ventilated
Type of Defrost		Automatic	Automatic	Automatic	Automatic
Refrigerant		R600a	R600a	R600a	R600a
Refrigerant Charge	g	70	70	135	135
Input Power	W	122	122	235	235
Voltage / Frequency	V/Hz	220-240/50	220-240/50	220-240/50	220-240/50
Energy Consumption	kWh/h	0,14	0,16	0,19	0,19
Build In Dimension (WxD)	mm	755 x 655	1090 x 655	1425 x 655	1755 x 655
Internal Dimension (WxDxH)	mm	676 x 576 x 186	1014 x 576 x 186	1344 x 576 x 186	1678 x 576 x 186
External Dimension (WxDxH)	mm	788 x 688 x 636	1122 x 688 x 636	1456 x 688 x 636	1790 x 688 x 636
Packed Dimension (WxDxH)	mm	842 x 760 x 742	1176 x 760 x 742	1510 x 760 x 742	1845 x 760 x 742
40ft Container Load	pcs	132	96	69	57



BLAST CHILLERS

Blast Chiller & Freezer

TEFCOLD blast chillers are widely used in professional kitchens when food needs to be cooled rapidly and hygienically. Using blast chillers for chilling or freezing retains the colour, texture and taste of the food. Core temperature sensors included.

Four different chill settings are pre-programmed into the programmable thermostats.

All sizes are supplied in high quality SS304 stainless steel and dimensioned for GN and Euronorm sizes.



TEFCOLD BLC10-P

Blast Chiller with preprogrammed thermostat.

For use in professional kitchens when food needs to be cooled rapidly and hygienically.

Blast Chillers



Guides for GN1/1 and Euronorm



Pre-programmed thermostat

BLC10-P

Blast Chiller/Freezer GN1/1

- Stainless steel
- Core sensor included
- Programmable thermostat
- 4 pre-set programs
- Guides for GN1/1 and Euronorm
- Reversible self-closing door
- Adjustable legs



BLC 5-P
Blast Chiller/Freezer GN1/1

- Stainless steel
- Core sensor included
- Programmable thermostat
- 4 pre-set programs
- Guides for GN1/1 and Euronorm
- Reversible self-closing door
- Adjustable legs



BLC 3-P
Blast Chiller/Freezer GN1/1

- Stainless steel
- Core sensor included
- Programmable thermostat
- 4 pre-set programs
- Guides for GN1/1 and Euronorm
- Reversible self-closing door
- Adjustable legs

MODEL		BLC 3-P	BLC 5-P	BLC10-P	BLC14
Capacity Freezing	kg	8	14	28	38
Capacity Cooling	kg	12	18	40	55
Capacity GN Pans		3	5	10	14
Gross / Net Volume	l	92 / 82	111 / 100	235 / 218	319 / 299
Gross / Net Weight	kg	122 / 117	125 / 120	175 / 170	210 / 205
Climate Class		4	4	4	4
Temperature Range	°C	-18 to 70	-18 to 70	-18 to 70	-18 to 70
Temperature Range 2	°C	3 to 70	3 to 70	3 to 70	3 to 70
Door Number & Type		1 hinged self-closing solid door	1 hinged self-closing solid door	1 hinged self-closing solid door	1 hinged self-closing solid door
Reversible door		Yes	Yes	Yes	Yes
Feet / Legs		4 adjustable legs	4 adjustable legs	4 adjustable legs	4 adjustable legs
Exterior Finish		SS304	SS304	SS304	SS304
Interior Finish		SS304	SS304	SS304	SS304
Thermometer		Yes	Yes	Yes	Yes
Type of Controller		Programmable	Programmable	Programmable	Programmable
Noise Level	db(A)	49	49	49	49
Type of Cooling		Blast	Blast	Blast	Blast
Type of Defrost		Automatic, hot gas	Automatic, hot gas	Automatic, hot gas	Automatic, hot gas
Refrigerant		R290	R290	R290	R452
Refrigerant Charge	g	130	130	150	1800
Input Power	W	700	800	1298	2000
Voltage / Frequency	V/Hz	220-240/50	220-240/50	220-240/50	380-400/50
Energy Consumption	kWh/kg	0,1	0,11	0,09	0,15
Internal Dimension (WxDxH)	mm	660 x 420 x 330	660 x 420 x 400	660 x 420 x 870	660 x 420 x 1150
External Dimension (WxDxH)	mm	800 x 815 x 925	800 x 815 x 995	800 x 815 x 1625	800 x 815 x 2170
Packed Dimension (WxDxH)	mm	900 x 920 x 1110	900 x 920 x 1200	900 x 920 x 1730	900 x 920 x 2200
40ft Container Load	pcs	52	52	26	26



UNDERCOUNTERS

Stainless Steel Flex Cooling Drawer Cabinet - Stainless Steel Undercounters

TEFCOLD undercounter range features models in high quality SS304 stainless steel with drawers and/or cabinets for installation under a counter in restaurants, cafés or bistros.

They are designed to GN dimensions with solid wire shelves and self-closing doors, or fitted with drawers. Cooling range goes from -2 to +8 degrees, making them ideal for a wide range of uses.

Flexible undercounter solutions, e.g. switching from cooling to freezing at the touch of a button (as in the UD range), which can be the perfect solution when space is limited or for frequent switching between cooling/freezing.

Temperature range can be set from -21 to -18 degrees, or +1 to +4 degrees. The four different products in the range can have one or two drawers, and come in two different widths. They are all dimensioned for GN canteens up to 150 mm deep.

Please note that the drawers should not be used without gastronorm pans and pans are accessory.

The top plate is designed to be able to withstand heavy appliances, such as deep fryers, ovens and the like.



TEFCOLD UC5210-I

Undercounter in stainless steel and self-closing doors.
This undercounter is ideal for a wide range of uses.

Uni-Drawers

DID YOU KNOW?

Our ambitions are high. We want to grow and aim to have the highest customer satisfaction in the market.



UD2-3-P

GN3/1 Uni-Drawer

- Two drawers individually switchable cooling/freezer
- Dual temperature
- Easily switchable between cooler and freezer
- Maximized storage space
- Ventilated cooling for fast pull-down and even temperature
- Automatic defrost
- Drawers must be used with gastronorm pans



From fridge to freeze by the touch of one button



GN3/1 drawers



UD1-2-P

GN2/1 Uni-Drawer

- One drawer switchable cooling/freezer
- Dual temperature
- Easily switchable between cooler and freezer
- Maximized storage space
- Ventilated cooling for fast pull-down and even temperature
- Automatic defrost
- Drawer must be used with gastronorm pans



UD2-2-P

GN2/1 Uni-Drawer

- Two drawers individually switchable cooling/freezer
- Dual temperature
- Easily switchable between cooler and freezer
- Maximized storage space
- Ventilated cooling for fast pull-down and even temperature
- Automatic defrost
- Drawers must be used with gastronorm pans

MODEL		UD1-2-P	UD1-3-P	UD2-2-P	UD2-3-P
Capacity GN Pans		2	3	4	6
Gross / Net Volume	l	78 / 51	116 / 77	179 / 102	265 / 154
Gross / Net Weight	kg	82 / 72	105 / 90	125 / 113	154 / 131
Climate Class		5	5	5	5
Temperature Range	°C	1 to 4	1 to 4	1 to 4	1 to 4
Temperature Range 2	°C	-21 to -18	-21 to -18	-21 to -18	-21 to -18
Drawers		1	1	2	2
Castors		4 wheels, 2 with brake	4 wheels, 2 with brake	4 wheels, 2 with brake	4 wheels, 2 with brake
Exterior Finish		SS304	SS304	SS304	SS304
Interior Finish		SS304	SS304	SS304	SS304
Thermometer		Yes	Yes	Yes	Yes
Type of Controller		Electronic	Electronic	Electronic	Electronic
Noise Level	db(A)	42	42	42	42
Type of Cooling		Ventilated	Ventilated	Ventilated	Ventilated
Type of Defrost		Automatic	Automatic	Automatic	Automatic
Refrigerant		R290	R290	R290	R290
Refrigerant Charge	g	70	70	140	140
Input Power	W	270	270	540	540
Voltage / Frequency	V/Hz	220-240/50	220-240/50	220-240/50	220-240/50
Energy Consumption	kWh/24h	2,21	2,39	3,66	3,88
Internal Dimension (WxDxH)	mm	675 x 565 x 205	1000 x 565 x 205	675 x 565 x 470	1000 x 565 x 470
External Dimension (WxDxH)	mm	905 x 700 x 600	1230 x 700 x 600	905 x 700 x 865	1230 x 700 x 865
Packed Dimension (WxDxH)	mm	980 x 770 x 740	1310 x 770 x 740	980 x 770 x 1000	1310 x 770 x 1000
40ft Container Load	pcs	90	72	60	48

Under Counters



UC5210-I

Under Counter GN1/1

- Stainless steel
- Ventilated cooling
- Automatic defrost
- Self-closing doors
- Adjustable legs



GN1/1 shelves



Strong wheels as option



UC5240-I Under Counter GN1/1

- Stainless steel
- Ventilated cooling
- Automatic defrost
- GN1/1 Drawers
- Adjustable legs

C



UC5310-I Under Counter GN1/1

- Stainless steel
- Ventilated cooling
- Automatic defrost
- Self-closing doors
- Adjustable legs

C

MODEL		UC5210-I	UC5240-I	UC5310-I
Gross / Net Volume	l	180 / 170	180 / 170	277 / 262
Gross / Net Weight	kg	95 / 82	115 / 102	135 / 125
Net Volume Energy Rating	l	126,9	92	194
Climate Class		4	4	4
Temperature Range	°C	-2 to 8	2 to 8	-2 to 8
Door Number & Type		2 hinged self-closing doors	-	3 hinged self-closing doors
Shelves Number & Type		2 wire shelves white	-	3 wire shelves white
Shelf Dimensions		GN1/1	-	GN1/1
Drawers		-	4 GN1/1 drawers	-
Feet / Legs		4 adjustable legs	4 adjustable legs	4 adjustable legs
Exterior Finish		SS304	SS304	SS304
Interior Finish		SS304	SS304	SS304
Thermometer		Yes	Yes	Yes
Type of Controller		Electronic	Electronic	Electronic
Noise Level	db(A)	42	42	42
Type of Cooling		Ventilated	Ventilated	Ventilated
Type of Defrost		Automatic	Automatic	Automatic
Refrigerant		R600a	R600a	R600a
Refrigerant Charge	g	85	85	85
Input Power	W	300	300	300
Energy Consumption	kWh/24h	2,15	2,15	2,51
Energy Classification		C	C	C
Internal Dimension (WxDxH)	mm	902 x 530 x 389	902 x 530 x 389	1337 x 530 x 389
External Dimension (WxDxH)	mm	1360 x 700 x 680	1360 x 700 x 680	1795 x 700 x 680
Packed Dimension (WxDxH)	mm	1405 x 750 x 720	1405 x 750 x 720	1830 x 750 x 720
40ft Container Load	pcs	72	72	54

Under Counters



UC5360-I

Under Counter GN1/1

- Stainless steel
- Ventilated cooling
- Automatic defrost
- GN1/1 Drawers
- Adjustable legs



GN1/1 drawers



Strong wheels as option



UC5410-I Under Counter GN1/1

- Stainless steel
- Ventilated cooling
- Automatic defrost
- Self-closing doors
- Adjustable legs

C



UC5480-I Under Counter GN1/1

- Stainless steel
- Ventilated cooling
- Automatic defrost
- GN1/1 Drawers
- Adjustable legs

C

MODEL		UC5360-I	UC5410-I	UC5480-I
Gross / Net Volume	l	277 / 262	370 / 350	370 / 350
Gross / Net Weight	kg	165 / 155	160 / 150	200 / 190
Net Volume Energy Rating	l	138	262	184
Climate Class		4	4	4
Temperature Range	°C	2 to 8	-2 to 8	2 to 10
Door Number & Type		-	4 hinged self-closing doors	-
Shelves Number & Type		-	4 wire shelves white	-
Shelf Dimensions		-	GN1/1	-
Drawers		6 GN1/1 drawers	-	8 GN1/1 drawers
Feet / Legs		4 adjustable legs	6 adjustable legs	6 adjustable legs
Exterior Finish		SS304	SS304	SS304
Interior Finish		SS304	SS304	SS304
Thermometer		Yes	Yes	Yes
Type of Controller		Electronic	Electronic	Electronic
Noise Level	db(A)	42	42	42
Type of Cooling		Ventilated	Ventilated	Ventilated
Type of Defrost		Automatic	Automatic	Automatic
Refrigerant		R600a	R600a	R600a
Refrigerant Charge	g	85	95	95
Input Power	W	300	300	300
Energy Consumption	kWh/24h	2,51	2,68	2,68
Energy Classification		C	C	C
Internal Dimension (WxDxH)	mm	1337 x 530 x 389	1772 x 530 x 389	1772 x 530 x 389
External Dimension (WxDxH)	mm	1795 x 700 x 680	2230 x 700 x 680	2230 x 700 x 680
Packed Dimension (WxDxH)	mm	1830 x 750 x 720	2260 x 750 x 720	2260 x 750 x 720
40ft Container Load	pcs	54	48	48